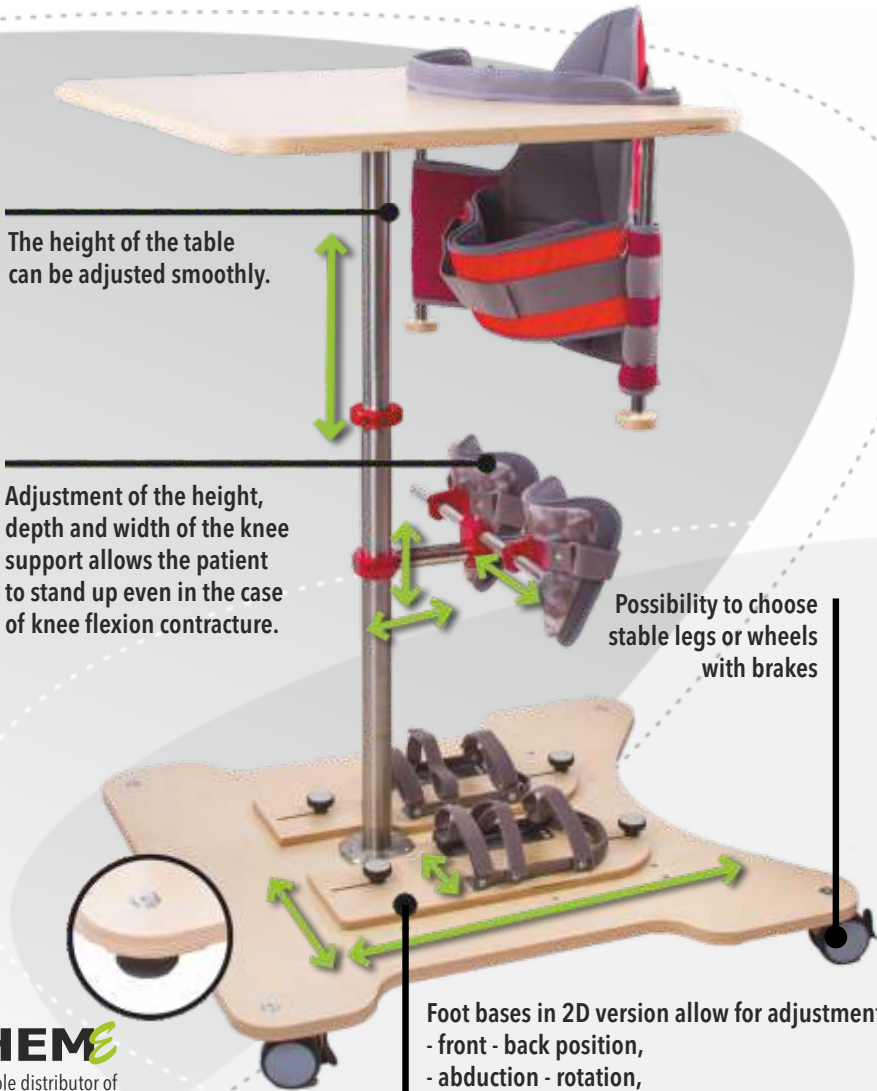


The **ERH 90.COMPOSITE** standing frame allows you to stand without the use of any additional devices. It is designed for children and adolescents with neurological disease entities who are unable to obtain a standing position on their own but do require to stand upright. The ERH 90 standing frame enables vertical mobility; facilitates both drainage of the urinary tract and circulatory system, simultaneously facilitating digestion processes. It also helps in reducing contractures and prevents sores.



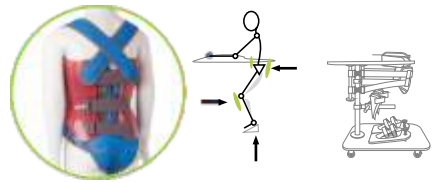
The height of the table can be adjusted smoothly.

Adjustment of the height, depth and width of the knee support allows the patient to stand up even in the case of knee flexion contracture.

Possibility to choose stable legs or wheels with brakes

Foot bases in 2D version allow for adjustment of:

- front - back position,
- abduction - rotation,
- the width of the footwear embraced



In special cases when additional torso stabilization is required, the ERH 48/3 medium / strong stiff corset is recommended.

Foot bases in 3D version, apart from adjustment of:

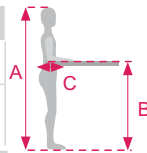
- front - back position,
- abduction - rotation,
- width of the footwear embraced also allow for smooth adjustment of the plantar flexion of the foot. This solution is dedicated to patients with Achilles tendon contracture.

Possibility to choose stable legs or wheels with brakes



COLORS DEPENDING ON THE SIZE

THE SIZE OF THE STANDING FRAME	S	M	L
A INDICATIVE HEIGHT OF THE USER / cm	60-105	82-150	97-180
B TABLE HEIGHT / cm MIN.-MAX. (distance from the ground to the bent elbow)	40-70	55-100	65-120
PELOT SIZE	S	M	L
C WAIST CIRCUMFERENCE	57-75	65-88	78-110



INDICATIONS

- cerebral palsy
- myelomeningocele
- genetic syndromes with limb paresis
- craniocerebral injuries
- demyelinating diseases

CONTACT

Rafał Chmielowiec
Export Manager

(Mobile and WhatsApp) + 48 530 304 144
+ 48 32 720 28 11
partner@mywam.pl



DISTRIBUTION:
MyWam Kupiec, Bartold, Angres Sp.J.
ul. Szczecińska 10, 41-516 Chorzów, Poland